

Hurricane 360° hand chain hoist

For the ultimate flexibility in a hand chain hoist, the CM Hurricane 360° is the choice for a wide range of applications. The patented hand chain cover rotates a full 360 degrees to allow loads to be lifted, pulled, or positioned from virtually any angle.

- **Standard Load Limiter** - For simple, automatic overload protection.
- **Braking Power** - Weston-Style braking system provides reliable positive load control.
- **Powder Coated Finish** - For corrosion protection.
- **Heat Treated Steel Gearing** - All internal gears & pinions are heat treated steel for high strength and long life.
- **Chain Guide & Stripper** - Assures load chain alignment.
- **Precision 4-Pocket Liftwheel** - Fully machined for better chain fit and reduced wear allowing for accurate movement of the load chain.
- **Hardened Steel Chain** - Alloy steel load chain assures high strength and long wear life.
- **Minimal Maintenance** - Easily disassembled, requiring no special tools.
- **Meets ASME B30.16** - And European CE Standard
- **5-Year Warranty** - Against defects in materials and workmanship.
- **Fast & Easy Parts Access** - Genuine CM Hurricane 360° parts are available in Total Repair Kits and convenient bulk packaging.



**Sealed Ball Bearings
and Sliding Bushings**



**Weston-Style
Brake System**

***WARNING**

Overloading and improper use can result in injury.

To avoid injury:

- Do not exceed working load limit, load rating capacity
- Do not use to lift people or loads over people.
- use only alloy chain for overhead lifting.
- Read and follow all instructions.



Cyclone hand chain hoist

One of the most popular and reliable hoists ever designed.

- Most interchangeability of parts in the industry
- Standard Load Limiter for simple, automatic overload protection
- Enclosed contoured Weston-type automatic brake for positive load control
- High-efficiency spur gearing for greater lift with minimum effort
- Rugged Hoistaloy chain for added strength and durability
- Fully machined, forged liftwheel pockets for easier lifting and smooth free chaining
- High-strength aluminum alloy castings in frame and covers
- Inspected over 75 times to meet or exceed HMI and ASME/ANSI performance and safety standards
- Standard hand chain drop is 2 feet less than lift, (example: 8 foot lift hoist has 6 foot hand chain drop)
- Lifetime warranty
- Metric rated
- Made in U.S.A.

Options Include:

- Fabric chain bags
- Metal chain containers
- Zinc-plated load and hand chain
- Unwelded hand chain
- Latchlok hooks
- Bronze hooks
- Bullard hooks
- Eye-type suspension



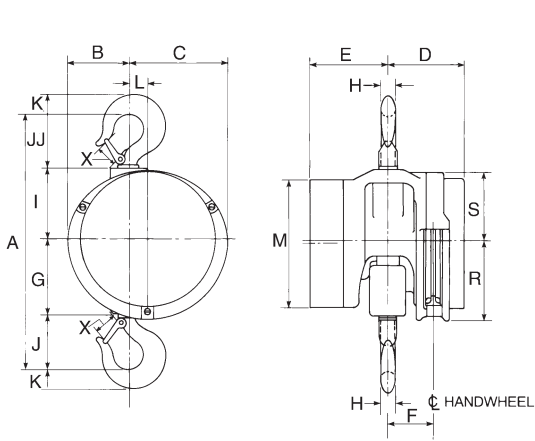
***WARNING**

Overloading and improper use can result in injury.

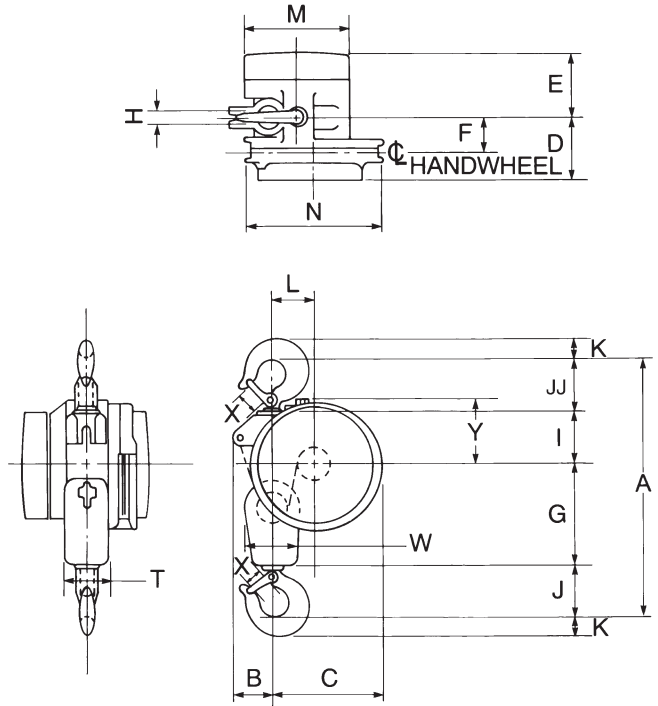
To avoid injury:

- Do not exceed working load limit, load rating capacity
- Do not use to lift people or loads over people.
- Use only alloy chain for overhead lifting.
- Read and follow all instructions.

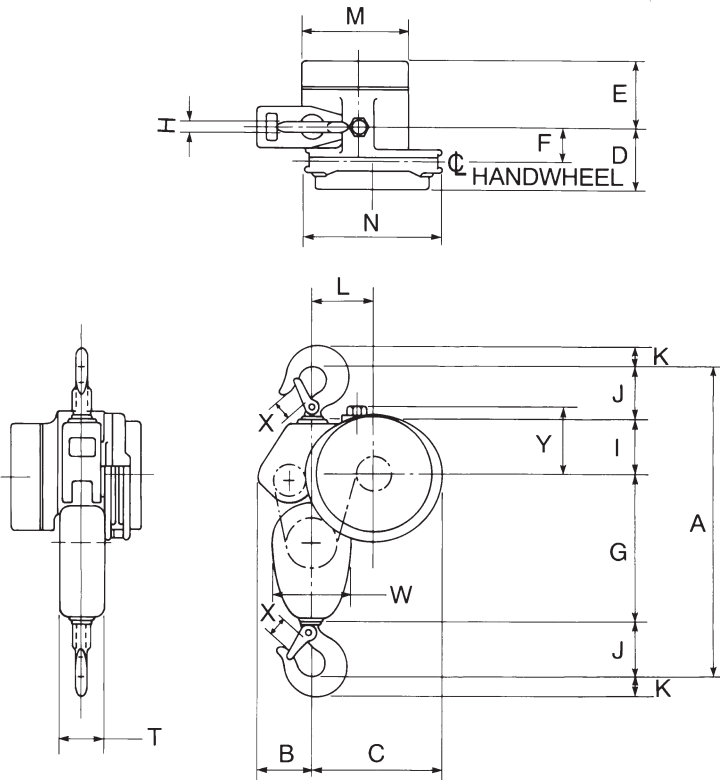
Cyclone hand chain hoist



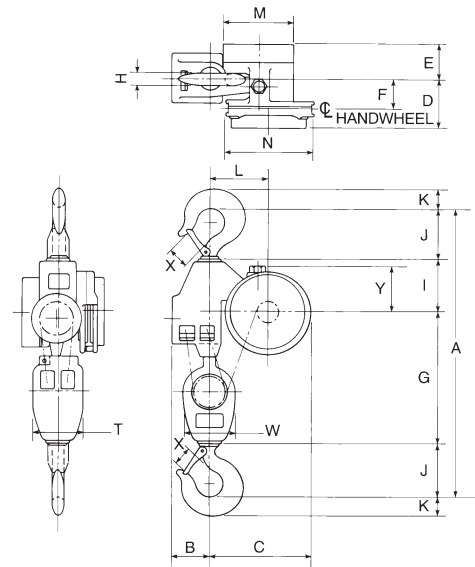
1/4 - 2 ton



3 - 4 ton



5 - 6 ton



8 - 10 ton

Cyclone hand chain hoist-Specifications

Specifications

| Rated capacity* (tons) | Product code | Standard lift† (ft.) | Reeving | Minimum distance between hooks (in.) | Chain overhauled to lift load one foot (ft.) | Chain pull to lift full load (lbs.) | Shipping weight (lbs.) |
|------------------------|--------------|----------------------|---------|--------------------------------------|--|-------------------------------------|------------------------|
| 1/4 | 4621 | 10 | 1 | 12 ⁷ / ₈ | 22 ¹ / ₂ | 23 | 40 |
| 1/2 | 4622 | 10 | 1 | 12 ⁷ / ₈ | 22 ¹ / ₂ | 46 | 40 |
| 1 | 4624 | 10 | 1 | 14 | 30 | 69 | 43 |
| 1 1/2 | 4625 | 10 | 1 | 17 ⁵ / ₁₆ | 40 ¹ / ₂ | 80 | 69 |
| 2 | 4626 | 10 | 1 | 17 ⁵ / ₁₆ | 52 | 83 | 68 |
| 3 | 4627 | 10 | 2 | 21 ¹ / ₂ | 81 | 85 | 103 |
| 4 | 4628 | 10 | 2 | 21 ¹ / ₂ | 104 | 88 | 103 |
| 5 | 4629 | 10 | 3 | 24 ¹ / ₄ | 156 | 75 | 138 |
| 6 | 4630 | 10 | 3 | 25 ¹ / ₄ | 156 | 90 | 142 |
| 8 | 4631 | 10 | 4 | 34 ¹ / ₂ | 208 | 89 | 247 |
| 10 | 4632 | 10 | 5 | 35 ¹ / ₂ | 260 | 95 | 250 |

† Can be supplied with longer lifts

Clearance dimensions (in.)

| Dimension | Rated capacity*(tons) | | | | | | | | |
|-----------|---------------------------------|---------------------------------|---------------------------------|---------------------------------|---------------------------------|----------------------------------|----------------------------------|---------------------------------|---------------------------------|
| | 1/4 | 1/2 | 1 | 1 1/2 & 2 | 3 & 4 | 5 | 6 | 8 | 10 |
| A | 12 ⁷ / ₈ | 12 ⁷ / ₈ | 14 | 17 ⁵ / ₁₆ | 21 ¹ / ₂ | 24 ¹ / ₄ | 25 ¹ / ₄ | 34 ¹ / ₂ | 35 ¹ / ₂ |
| B | 3 ¹¹ / ₁₆ | 3 ¹¹ / ₁₆ | 3 ¹ / ₄ | 4 ³ / ₁₆ | 3 ⁵ / ₁₆ | 4 ³ / ₁₆ | 4 ³ / ₁₆ | 4 ³ / ₄ | 4 ³ / ₄ |
| C | 7 ³ / ₁₆ | 7 ³ / ₁₆ | 7 ³ / ₁₆ | 6 ¹¹ / ₁₆ | 8 ¹⁵ / ₁₆ | 10 ⁵ / ₁₆ | 10 ⁵ / ₁₆ | 12 ³ / ₄ | 12 ³ / ₄ |
| D | 4 ¹ / ₈ | 4 ¹ / ₈ | 4 ¹ / ₈ | 5 ¹ / ₁₆ | 5 ¹ / ₁₆ | 4 ⁷ / ₈ | 4 ⁷ / ₈ | 5 ¹³ / ₁₆ | 5 ¹³ / ₁₆ |
| E | 3 ¹ / ₄ | 3 ¹ / ₄ | 3 ¹ / ₄ | 4 ¹³ / ₁₆ | 4 ¹³ / ₁₆ | 5 | 5 | 4 ¹ / ₁₆ | 4 ¹ / ₁₆ |
| F | 2 ¹ / ₁₆ | 2 ¹ / ₁₆ | 2 ¹ / ₁₆ | 3 ¹ / ₈ | 3 | 2 ¹⁵ / ₁₆ | 2 ¹⁵ / ₁₆ | 3 ³ / ₄ | 3 ³ / ₄ |
| G | 3 ⁷ / ₈ | 3 ⁷ / ₈ | 3 ³ / ₄ | 5 ³ / ₁₆ | 8 ¹ / ₄ | 11 ¹³ / ₁₆ | 11 ¹³ / ₁₆ | 17 ³ / ₁₆ | 17 ³ / ₁₆ |
| H | 1 ¹ / ₁₆ | 1 ¹ / ₁₆ | 1 ³ / ₁₆ | 1 ¹ / ₈ | 1 ¹ / ₄ | 1 ¹ / ₄ | 1 ³ / ₈ | 1 ¹¹ / ₁₆ | 1 ¹³ / ₁₆ |
| I | 3 ³ / ₄ | 3 ³ / ₄ | 3 ³ / ₄ | 4 ¹³ / ₁₆ | 4 ¹ / ₄ | 4 ³ / ₁₆ | 4 ³ / ₁₆ | 6 ¹ / ₁₆ | 6 ¹ / ₁₆ |
| J | 2 ⁵ / ₈ | 2 ⁵ / ₈ | 2 ¹⁵ / ₁₆ | 3 ⁵ / ₈ | 4 ¹ / ₈ | 4 ¹ / ₈ | 4 ⁵ / ₈ | 5 ⁵ / ₈ | 6 ¹ / ₈ |
| JJ | 2 ⁵ / ₈ | 2 ⁵ / ₈ | 3 ⁹ / ₁₆ | 3 ¹¹ / ₁₆ | 4 ⁷ / ₈ | — | — | — | — |
| K | 1 ⁵ / ₁₆ | 1 ⁵ / ₁₆ | 1 ¹ / ₈ | 1 ¹ / ₂ | 1 ¹¹ / ₁₆ | 1 ¹¹ / ₁₆ | 1 ⁷ / ₈ | 2 ¹ / ₄ | 2 ⁹ / ₁₆ |
| L | 1 ³ / ₄ | 1 ³ / ₄ | 1 ³ / ₄ | 1 ¹ / ₄ | 3 ¹ / ₂ | 4 ⁷ / ₈ | 4 ⁷ / ₈ | 7 ⁵ / ₁₆ | 7 ⁵ / ₁₆ |
| M | 7 ¹ / ₁₆ | 7 ¹ / ₁₆ | 7 ¹ / ₁₆ | 8 ⁵ / ₈ | 8 ⁵ / ₈ | 8 ⁵ / ₈ | 8 ⁵ / ₈ | 8 ⁵ / ₈ | 8 ⁵ / ₈ |
| N | — | — | — | — | 10 ⁷ / ₈ | 10 ⁷ / ₈ | 10 ⁷ / ₈ | 10 ⁷ / ₈ | 10 ⁷ / ₈ |
| R | 5 ⁷ / ₁₆ | 5 ⁷ / ₁₆ | 5 ⁷ / ₁₆ | 5 ⁷ / ₁₆ | — | — | — | — | — |
| S | 4 ¹¹ / ₁₆ | 4 ¹¹ / ₁₆ | 4 ¹¹ / ₁₆ | 4 ¹¹ / ₁₆ | — | — | — | — | — |
| T | — | — | — | — | 3 ⁷ / ₈ | 4 | 4 | 6 ³ / ₈ | 6 ³ / ₈ |
| W | — | — | — | — | 4 ¹ / ₂ | 6 ¹ / ₄ | 6 ¹ / ₄ | 6 ⁷ / ₁₆ | 6 ⁷ / ₁₆ |
| X | 1 ¹ / ₃₂ | 1 ¹ / ₃₂ | 1 ¹ / ₈ | 1 ⁵ / ₁₆ | 1 ⁵ / ₈ | 1 ⁵ / ₈ | 1 ³ / ₄ | 2 ¹ / ₁₆ | 2 ⁵ / ₁₆ |
| Y | — | — | — | — | 5 ¹ / ₈ | 5 ⁷ / ₈ | 5 ⁷ / ₈ | 5 ⁹ / ₁₆ | 5 ⁹ / ₁₆ |

***⚠ WARNING**

Overloading and improper use can result in injury.

To avoid injury:

- Do not exceed working load limit, load rating capacity
- Do not use to lift people or loads over people.
- use only alloy chain for overhead lifting.
- Read and follow all instructions.

Series 622 hand chain hoist

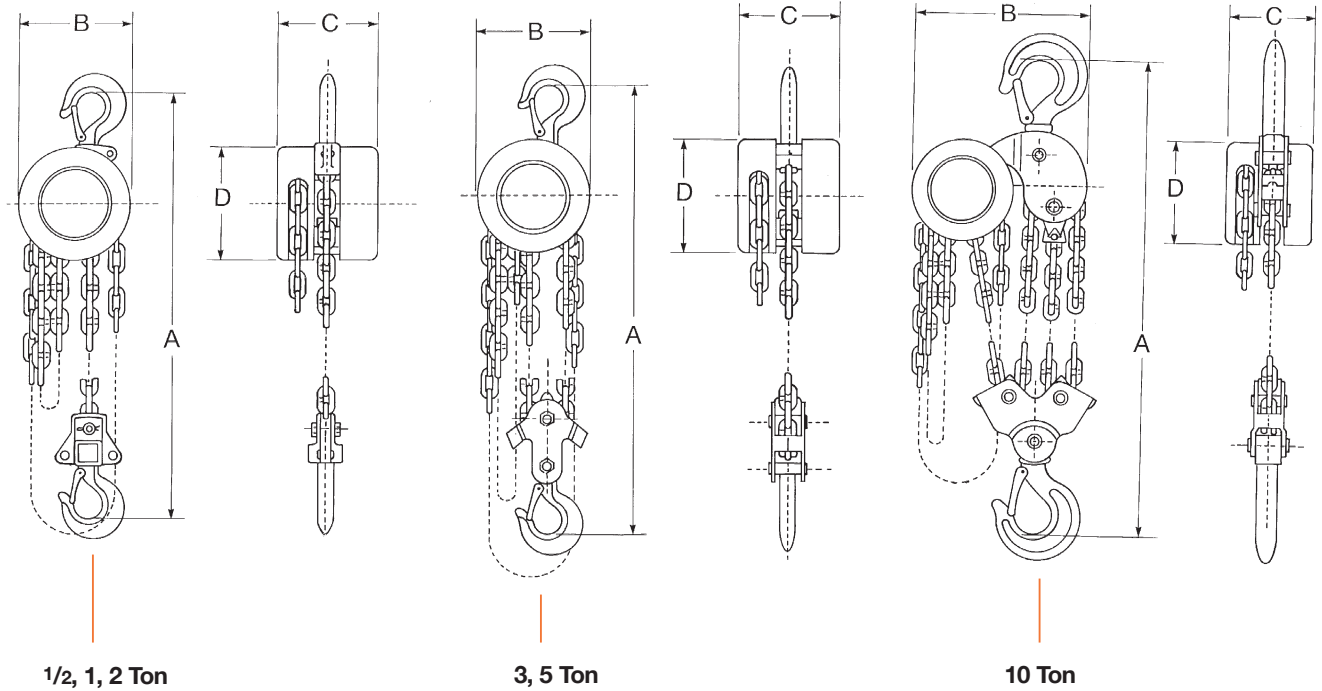
- Simple, efficient, economical design
- Equipped with hardened load chain for flexibility and long wear
- Compact design, low headroom and lightweight steel construction for easy installation, even in confined spaces
- Weston-type load brake requires no lubrication
- Hand wheel cover with guide slots minimizes jamming and slipping
- Forged swivel hooks with latches reduce twisting of chain and unintentional unhooking of load when chain is slack
- Standard hand chain drop is 2 feet less than lift (example: 8 foot lift hoist has 6 foot hand chain drop)
- One-year warranty
- Metric rated
- Imported



Specifications

| Product code | Rated capacity* (tons) | Standard lift (ft.) | Chain pull to lift rated load (lbs.) | Hand chain overhauled to lift load one foot (ft.) | Approx. shipping weight (lbs.) |
|--------------|------------------------|---------------------|--------------------------------------|---|--------------------------------|
| 2255 | 1/2 | 10 | 53 | 29 | 18 |
| 2208 | 1/2 | 15 | 53 | 29 | 25 |
| 2231 | 1/2 | 20 | 53 | 29 | 30 |
| 2263 | 1/2 | 30 | 53 | 29 | 38 |
| 2256 | 1 | 10 | 77 | 37 | 26 |
| 2210 | 1 | 15 | 77 | 37 | 30 |
| 2262 | 1 | 20 | 77 | 37 | 38 |
| 2264 | 1 | 30 | 77 | 37 | 48 |
| 2258 | 2 | 10 | 82 | 80 | 61 |
| 2213 | 2 | 15 | 82 | 80 | 71 |
| 2233 | 2 | 20 | 82 | 80 | 80 |
| 2272 | 2 | 30 | 85 | 80 | 85 |
| 2259 | 3 | 10 | 65 | 154 | 89 |
| 2223 | 3 | 15 | 65 | 154 | 99 |
| 2214 | 3 | 20 | 65 | 154 | 109 |
| 2260 | 5 | 10 | 105 | 147 | 91 |
| 2257 | 5 | 15 | 105 | 147 | 107 |
| 2234 | 5 | 20 | 105 | 147 | 123 |
| 2277 | 10 | 10 | 109 | 289 | 170 |

Series 622 hand chain hoist-specifications



***WARNING**

Overloading and improper use can result in injury.

To avoid injury:

- Do not exceed working load limit, load rating capacity
- Do not use to lift people or loads over people.
- use only alloy chain for overhead lifting.
- Read and follow all instructions.

Clearance dimensions (in.)

| Dimension | Rated capacity* (tons) | | | | | |
|----------------------|---------------------------------|---------------------------------|--------------------------------|----------------------------------|---------------------------------|---------------------------------|
| | 1/2 | 1 | 2 | 3 | 5 | 10 |
| A (Headroom) | 11 ⁵ / ₈ | 13 | 18 ¹ / ₈ | 21 ²⁹ / ₃₂ | 23 ⁷ / ₈ | 27 ⁹ / ₁₆ |
| B (Width) | 4 ¹⁵ / ₁₆ | 5 ¹⁹ / ₃₂ | 8 ⁵ / ₁₆ | 8 ⁵ / ₁₆ | 8 ⁵ / ₁₆ | 14 ³ / ₃₂ |
| C (Depth) | 4 ⁵ / ₁₆ | 5 ¹ / ₁₆ | 6 ⁵ / ₈ | 6 ⁵ / ₈ | 6 ⁵ / ₈ | 6 ⁵ / ₈ |
| D (Diameter) | 4 ¹⁵ / ₁₆ | 5 ¹⁹ / ₃₂ | 8 ⁵ / ₁₆ | 8 ⁵ / ₁₆ | 8 ⁵ / ₁₆ | 8 ⁵ / ₁₆ |
| Hook opening (upper) | 1 ¹ / ₁₆ | 1 ¹ / ₃₂ | 1 ¹ / ₄ | 1 ⁵ / ₁₆ | 1 ¹³ / ₁₆ | 2 ¹ / ₂ |
| Hook opening (lower) | 1 ¹ / ₁₆ | 1 ¹ / ₃₂ | 1 ¹ / ₄ | 1 ⁵ / ₁₆ | 1 ¹³ / ₁₆ | 2 ¹ / ₂ |